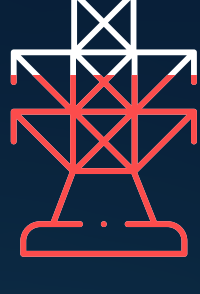


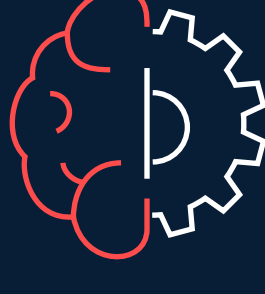
Colocation Data Center in Phoenix Secure. Scalable. Connected.

Tap into Arizona's Premier Network Hub

AI is Disrupting the Data Center Market



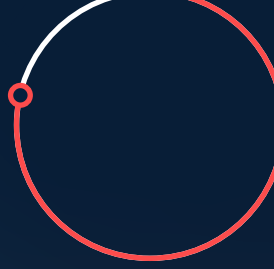
Global AI data center
power demand
could reach
68 GW
by 2027.



A single AI training
run could demand
1 GW
in a single location
by 2028.



In Virginia, power
connection requests
now take from
4-7 years
to process.



Nearly
80%
of the upcoming data center
space is already pre-leased
ahead of completion.

- Transmission line projects face complex **multistate permitting processes and local opposition**, delaying power delivery to suitable sites.
- The rapid increase in power demand may force U.S. companies to build data centers abroad, potentially **compromising U.S. AI leadership and increasing security risks**.
- Supply chain issues greatly delay data center construction – emergency power generators now have **waiting times of more than 1 year**.

Source: RAND, AI's Power Requirements Under Exponential Growth, 2025

Overcome Power, Space, and Connectivity Constraints

Cost-effectively scale your IT infrastructure as
you grow.

Access **best-in-class data center technologies**,
unparalleled connectivity options, and **data availability
services** – all with **24/7 expert support**. With **100,000 sq. ft.**
of operational floor space and 530,000 sq. ft. expansion
underway, the phoenixNAP data center in Phoenix is built to
handle the growing demands of modern enterprises.
Migrate to Phoenix and ensure your critical data and
applications are housed in a **secure, scalable environment**
supporting your business growth.



Enterprise-Grade Environment

Scale seamlessly in a **100,000
sq. ft. facility**, with a new
530,000 sq. ft. expansion
underway. Leverage **redundant
power and cooling** with a
high-density design supporting
up to **44 kW per rack**.

Arizona's Network Hub

Connect to **40+ carriers** and
establish a **direct, low-latency
connection to all major
hyperscale public cloud
providers**. Use our **9+ Tbps
global network backbone** to
power your workloads.

Hybrid Cloud Optimization

Integrate your colocation
environment with your public
cloud services and **easily deploy
phoenixNAP's hardware, cloud
servers, or data availability
services** to enhance
performance and resilience.

Arizona's First Location Offering Direct
On-Ramp Access to All Three Major Public
Cloud Providers, Including:



Meets or exceeds requirements for:
HIPAA SOX GLBA

Cabinets and Space

- 350+ watts per square foot
- Flexible circuit configurations
- Redundant to the substation
- Tier 3 standard availability + concurrent maintainability
- 2N Power Redundancy Available

Flexible Deployment Options

Private Cages

- Customizable private environments
- Flexible ramp schedules starting with only one cabinet

High-Density Single Cabinets

- 208V Single/Three-phase circuits

Fractional Cabinets

- 21U ½ cabinets with 120V 30A
- 10U ¼ cabinets with 120V 30A

Unmatched Growth Potential

- Future-ready space and power capacity
- Global footprint (18 data centers + 11 network PoPs)
- Hardware leasing options
- API-driven Bare Metal Cloud servers
- Secure cloud solutions
- Industry-leading cloud backup and DR



"phoenixNAP is a top-of-the-line data center. When
looking to expand, we examined and did personal
tours with several of the data centers in the
Valley. We were wasting our time though because
phoenixNAP was by far the best we found. They had
the most carriers, which allowed for the cheapest,
fastest and highest quality bandwidth, as well as
extremely competitive pricing on cabinets."

DENNETT INGRAM
Owner, EpicUP

Schedule a Virtual Tour!

Scan the QR code to schedule
a virtual tour of our data center!



Follow us on Social Media!

